



LIGHTNING MASTS



WIND LOAD - 80 mph

L/50 DEFLECTION

CATALOG NUMBER	MAST HEIGHT	<u>BASE SECTION</u>		TOP SECTION
		<u>NUMBER</u>	<u>HEIGHT</u>	
LM-30-0-80	30'	LM20-80	20'	1 1/2" PIPE X 10'
LM-35-0-80	35'	LM25-80	25'	1 1/2" PIPE X 10'
LM-40-0-80	40'	LM30-80	30'	1 1/2" PIPE X 10'
LM-45-0-80	45'	LM35-80	35'	1 1/2" PIPE X 10'
LM-50-0-80	50'	LM40-80	40'	1 1/2" PIPE X 10'
LM-55-0-80	55'	LM45-80	45'	1 1/2" PIPE X 10'
LM-60-0-80	60'	LM50-80	50'	1 1/2" PIPE X 10'
LM-65-0-80	65'	LM55-80	55'	1 1/2" PIPE X 10'
LM-70-0-80	70'	LM60-80	60'	1 1/2" PIPE X 10'
LM-75-0-80	75'	LM65-80	65'	1 1/2" PIPE X 10'
LM-80-0-80	80'	LM70-80	70'	1 1/2" PIPE X 10'
LM-85-0-80	85'	LM75-80	75'	1 1/2" PIPE X 10'
LM-90-0-80	90'	LM80-80	80'	1 1/2" PIPE X 10'



LIGHTNING MASTS



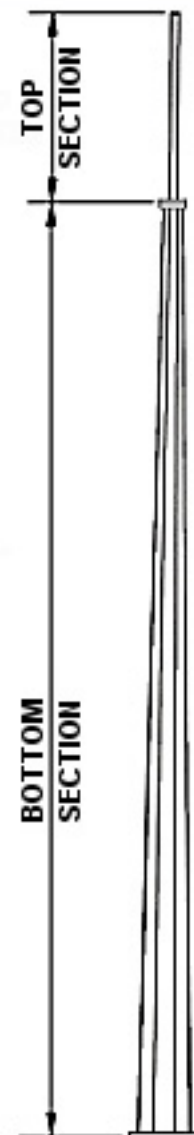
WIND LOAD - 100 mph

L/50 DEFLECTION

CATALOG <u>NUMBER</u>	MAST <u>HEIGHT</u>	<u>BASE SECTION</u>		<u>TOP SECTION</u>
		<u>NUMBER</u>	<u>HEIGHT</u>	
LM-30-0-100	30'	LM20-100	20'	1 1/2" PIPE X 10'
LM-35-0-100	35'	LM25-100	25'	1 1/2" PIPE X 10'
LM-40-0-100	40'	LM30-100	30'	1 1/2" PIPE X 10'
LM-45-0-100	45'	LM35-100	35'	1 1/2" PIPE X 10'
LM-50-0-100	50'	LM40-100	40'	1 1/2" PIPE X 10'
LM-55-0-100	55'	LM45-100	45'	1 1/2" PIPE X 10'
LM-60-0-100	60'	LM50-100	50'	1 1/2" PIPE X 10'
LM-65-0-100	65'	LM55-100	55'	1 1/2" PIPE X 10'
LM-70-0-100	70'	LM60-100	60'	1 1/2" PIPE X 10'
LM-75-0-100	75'	LM65-100	65'	1 1/2" PIPE X 10'
LM-80-0-100	80'	LM70-100	70'	1 1/2" PIPE X 10'
LM-85-0-100	85'	LM75-100	75'	1 1/2" PIPE X 10'
LM-90-0-100	90'	LM80-100	80'	1 1/2" PIPE X 10'



LIGHTNING MASTS



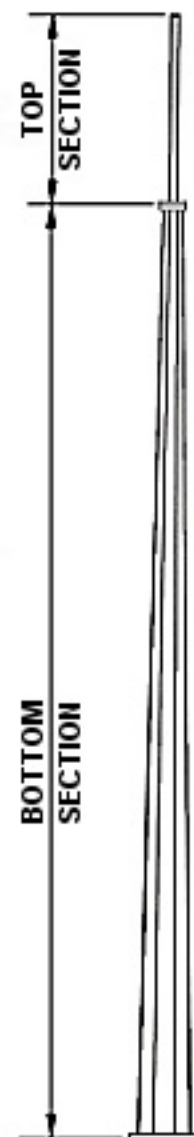
WIND LOAD - 110 mph

L/50 DEFLECTION

CATALOG NUMBER	MAST HEIGHT	BASE SECTION		TOP SECTION
		NUMBER	HEIGHT	
LM-30-0-110	30'	LM20-110	20'	1 1/2" PIPE X 10'
LM-35-0-110	35'	LM25-110	25'	1 1/2" PIPE X 10'
LM-40-0-110	40'	LM30-110	30'	1 1/2" PIPE X 10'
LM-45-0-110	45'	LM35-110	35'	1 1/2" PIPE X 10'
LM-50-0-110	50'	LM40-110	40'	1 1/2" PIPE X 10'
LM-55-0-110	55'	LM45-110	45'	1 1/2" PIPE X 10'
LM-60-0-110	60'	LM50-110	50'	1 1/2" PIPE X 10'
LM-65-0-110	65'	LM55-110	55'	1 1/2" PIPE X 10'
LM-70-0-110	70'	LM60-110	60'	1 1/2" PIPE X 10'
LM-75-0-110	75'	LM65-110	65'	1 1/2" PIPE X 10'
LM-80-0-110	80'	LM70-110	70'	1 1/2" PIPE X 10'
LM-85-0-110	85'	LM75-110	75'	1 1/2" PIPE X 10'
LM-90-0-110	90'	LM80-110	80'	1 1/2" PIPE X 10'



LIGHTNING MASTS



WIND LOAD - 120 mph

L/50 DEFLECTION

CATALOG NUMBER	MAST HEIGHT	BASE SECTION		TOP SECTION
		NUMBER	HEIGHT	
LM-30-0-120	30'	LM20-120	20'	1 1/2" PIPE X 10'
LM-35-0-120	35'	LM25-120	25'	1 1/2" PIPE X 10'
LM-40-0-120	40'	LM30-120	30'	1 1/2" PIPE X 10'
LM-45-0-120	45'	LM35-120	35'	1 1/2" PIPE X 10'
LM-50-0-120	50'	LM40-120	40'	1 1/2" PIPE X 10'
LM-55-0-120	55'	LM45-120	45'	1 1/2" PIPE X 10'
LM-60-0-120	60'	LM50-120	50'	1 1/2" PIPE X 10'
LM-65-0-120	65'	LM55-120	55'	1 1/2" PIPE X 10'
LM-70-0-120	70'	LM60-120	60'	1 1/2" PIPE X 10'
LM-75-0-120	75'	LM65-120	65'	1 1/2" PIPE X 10'
LM-80-0-120	80'	LM70-120	70'	1 1/2" PIPE X 10'
LM-85-0-120	85'	LM75-120	75'	1 1/2" PIPE X 10'
LM-90-0-120	90'	LM80-120	80'	1 1/2" PIPE X 10'



LIGHTNING MASTS

WIND LOAD - 130 mph

L/50 DEFLECTION

CATALOG <u>NUMBER</u>	MAST <u>HEIGHT</u>	<u>BASE SECTION</u>		TOP <u>SECTION</u>
		<u>NUMBER</u>	<u>HEIGHT</u>	
LM-30-0-130	30'	LM20-130	20'	1 1/2" PIPE X 10'
LM-35-0-130	35'	LM25-130	25'	1 1/2" PIPE X 10'
LM-40-0-130	40'	LM30-130	30'	1 1/2" PIPE X 10'
LM-45-0-130	45'	LM35-130	35'	1 1/2" PIPE X 10'
LM-50-0-130	50'	LM40-130	40'	1 1/2" PIPE X 10'
LM-55-0-130	55'	LM45-130	45'	1 1/2" PIPE X 10'
LM-60-0-130	60'	LM50-130	50'	1 1/2" PIPE X 10'
LM-65-0-130	65'	LM55-130	55'	1 1/2" PIPE X 10'
LM-70-0-130	70'	LM60-130	60'	1 1/2" PIPE X 10'
LM-75-0-130	75'	LM65-130	65'	1 1/2" PIPE X 10'
LM-80-0-130	80'	LM70-130	70'	1 1/2" PIPE X 10'
LM-85-0-130	85'	LM75-130	75'	1 1/2" PIPE X 10'
LM-90-0-130	90'	LM80-130	80'	1 1/2" PIPE X 10'